

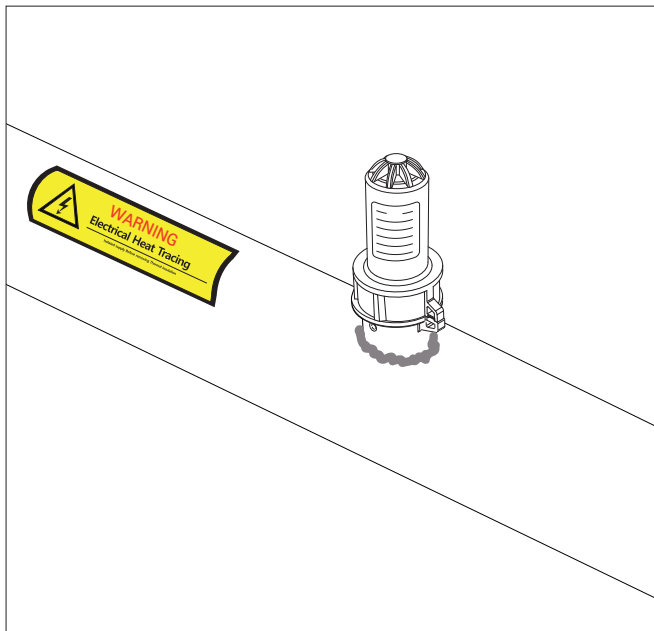
# Gaumer Connection Kits

## Installation Instructions

---

### GB300

On-Pipe End Seal  
or In-Line Splice Connection



## Description

- GB300 is an above insulation end seal kit for use with GAUMER GHT-CR, GHT-CR, and GHU-CT self-regulating heating cables.
- GB300 can be used either as an end seal for up to two heating cables or as an in-line splice connection. This kit contains parts for two heating cable end seals.
- For in-line splice connections, the separate “GB-SK” accessory pack is required and sold separately. For in-line splice, please go to page 21.

## Approvals

「 GB300 」



### FM24US0113X, FM24CA0042X

Hazardous (classified) locations, indoors and outdoors  
Class I, Division 2, Groups A, B, C and D T\*;  
Class II/III, Division 2, Groups E, F and G T\*;  
Class I, Zone 1, AEx/Ex eb IIC Gb  
Zone 21, AEx/Ex tb IIIC T\* °C Db  
Type 4X, IP66  
Ta = -40°C to +55°C



### FM24ATEX0018X

II 2 G Ex 60079-30-1 IIC T\* Gb;  
II 2 D Ex 60079-30-1 IIIC T\* °C Db;  
II 2 G Ex eb IIC Gb;  
II 2 D Ex tb IIIC Db  
IP66  
Ta = -40°C to +55°C

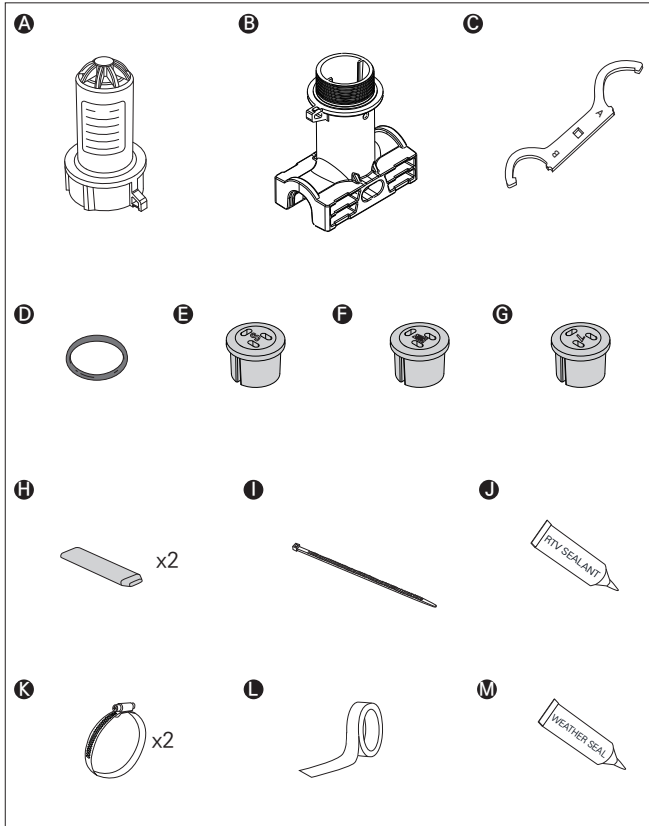


### IECEX FMG 24.0017X

Ex eb IIC T\* Gb;  
Ex tb IIIC T\* °C Db

- T\* = For T-rating, please refer to cable documentation.

## Kit Contents



Item	Description	Qty.
A	End Cap	1
B	Stand	1
C	Wrench	1
D	Stand O-ring	1
E	GHU-CT/GHT-CT Grommet (3 holes)	1
F	GHT-CR Grommet (3 holes)	1
G	GHK-CT Grommet (3 holes)	1
H	Rubber End Cap	2
I	Cable Tie	1
J	RTV Adhesive	1
K	Pipe Strap (Sold Separately)	2
L	Fixing Tape (Sold Separately)	1
M	Weather Seal (Sold Separately)	1

## Accessory Package

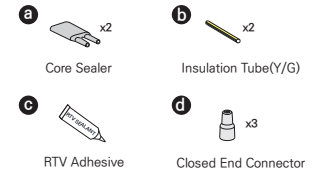
### "GB-EK" for End Seal

<Included in GB300 kit>



### "GB-SK" for Splice connection

<Sold separately>



---

## Tools Required

- Wire cutters
- Marking pen
- Adjustable pliers
- Needle nose pliers
- Utility knife
- Large slotted screwdriver
- Molex RHT-7000 crimp tool or equivalent; 10-16AWG slot (For in-line splice connection only)

## Additional Materials Required

- Pipe Strap

GPS-SS02	Pipe up to 2" Outer Diameter
GPS-SS05	Pipe up to 5" Outer Diameter
GPS-SS10	Pipe up to 10" Outer Diameter
GPS-SS18	Pipe up to 18" Outer Diameter
GPS-SS24	Pipe up to 24" Outer Diameter

- For installation on small pipes smaller than 1" (25mm), contact Gaumer Process for small pipe adapter, GSPA.
- Fixing Tape
  - GFT-L98 : Fiberglass Tape low temp; 1/2" \* 98ft (30m)
  - GFT-H98 : Fiberglass Tape high temp; 1/2" \* 98ft (30m)
  - GAT2/3-L164 : Aluminum tape low temp ; 2" or 3" \* 164ft (50m)
- Stand Extension

For installation with insulation thicker than 3" (76mm), or on very hot pipe, contact Gaumer Process for stand extension, GPSE.

---

## CAUTION

- The minimum installation temperature is -40°F (-40°C). For more convenient installation, we recommend performing the installation at a temperature above freezing. Store the kit at a temperature above freezing until installation.
- Only qualified personnel shall design and install ground fault equipment, circuit breakers, thermal insulation to cover the heating cable on the pipes, and to provide commissioning, service, operation, maintenance, and supervision.
- During installation, it's essential to employ the appropriate personal protective equipment (PPE). If you have further inquiries, do not hesitate to contact Gaumer Process.

---

## WARNING

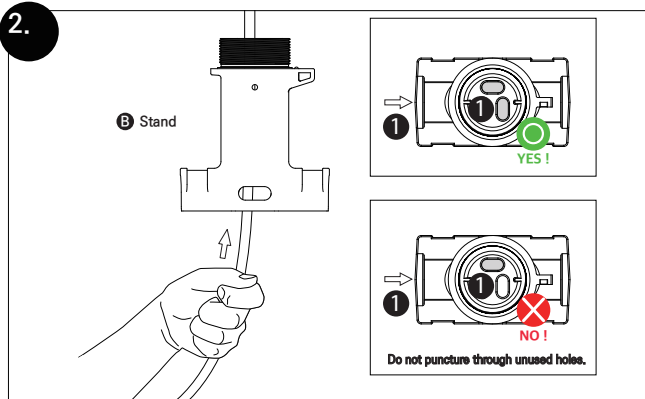
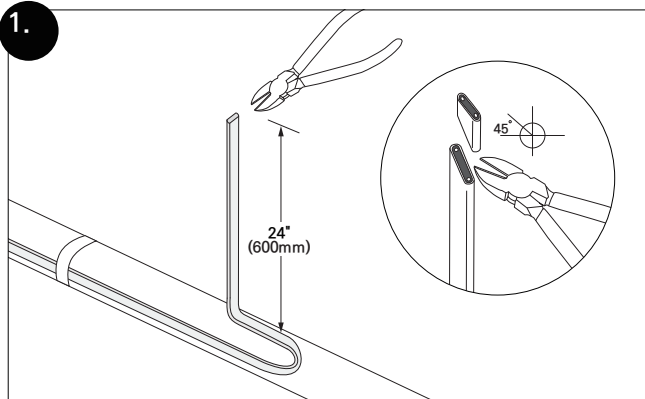
- Gaumer heat-tracing systems must be installed correctly to ensure proper operation and to prevent shocks and fires. Pay attention to warnings and carefully follow applicable installation instructions.
- **ELECTRIC SHOCK OR FIRE HAZARD**
  - The installation must comply with Gaumer's requirements and adhere to the guidelines outlined in the National Electrical Code (NEC) and Canadian Electrical Code (CEC), as well as any other relevant national and local codes.
  - Ground-fault equipment protection must be utilized on each heating cable branch circuit.
- The approvals and performance of the heat tracing systems are based exclusively on the use of Gaumer Process specified parts. It is imperative that parts are not substituted and commonly used electrical tape for insulation of heating cable is not allowed.
- Damaged bus wires have the potential to overheat or cause short circuits. When scoring the jacket or core, it is essential to avoid breaking the bus wire strands.
- Both components and cable ends must be kept dry before and throughout the installation process.
- The potential for bus wires to overheat or short circuit exists if the bus wire strands are broken while preparing the cable for connection. Reuse of grommets or use of the wrong grommet can result in leaks, cracked components, shocks, or fires. Ensure the type or opening size of grommet is correct for the heating cable being installed. A new grommet is

---

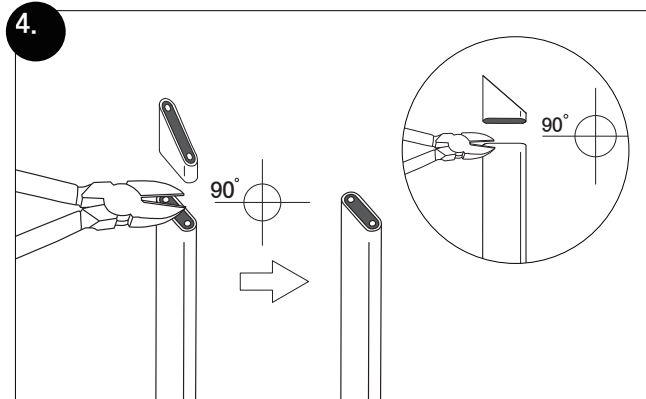
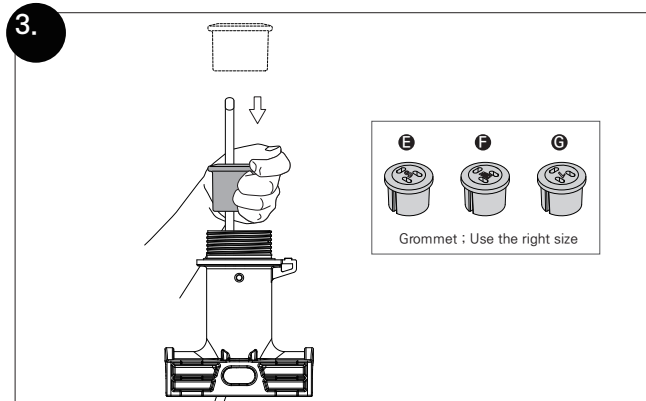
recommended whenever the cable has been pulled out of the component.

- Before and during installation or servicing, all power circuits must be de-energized.
- Read the MSDS for RTV and components carefully.
- It is recommended to use fire-resistant insulation that is compatible with the application and the maximum exposure temperature of the heat tracing system.

## End Seal

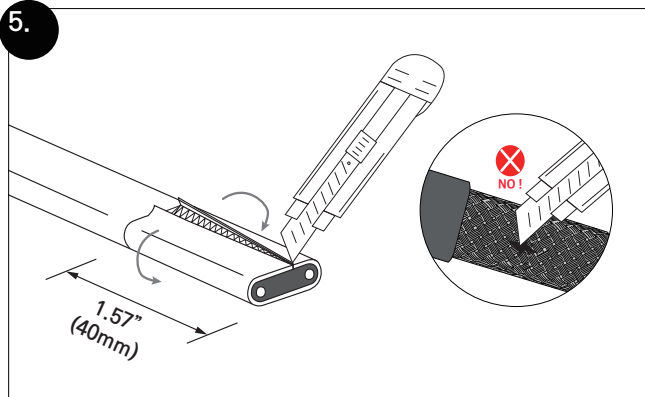


## End Seal

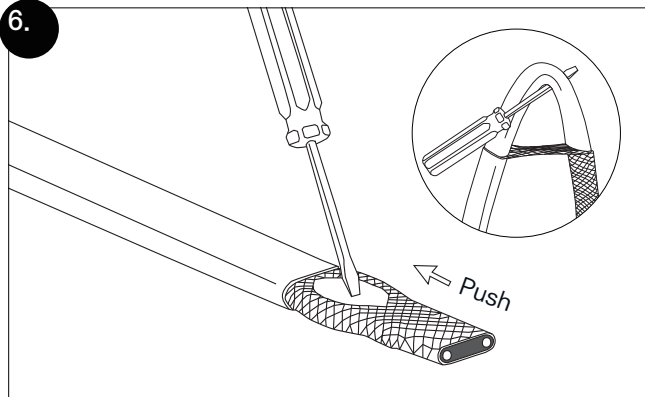


## End Seal

5.

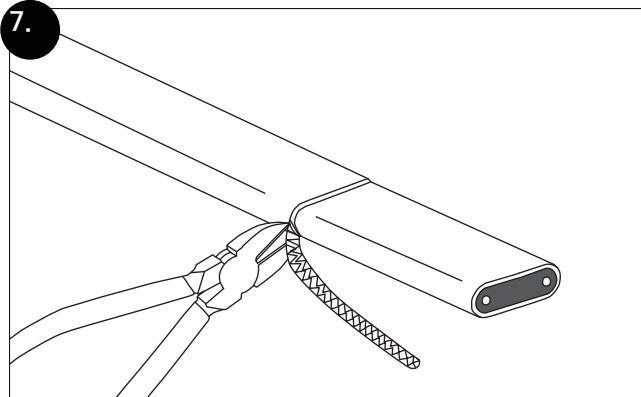


6.

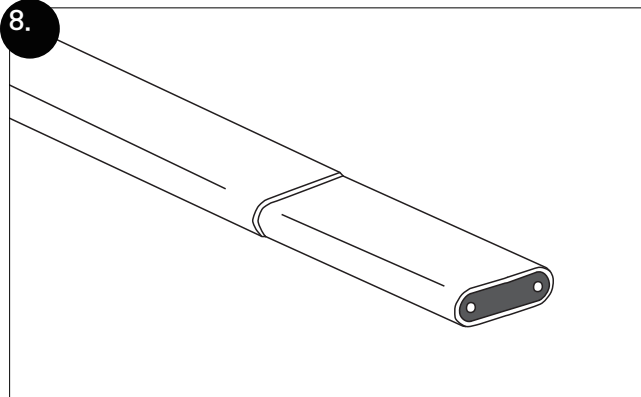


## End Seal

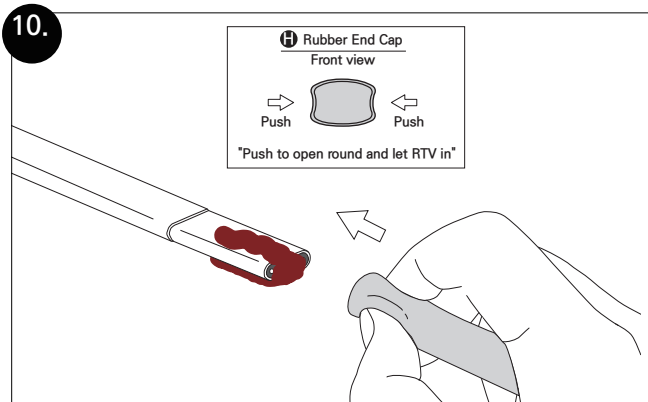
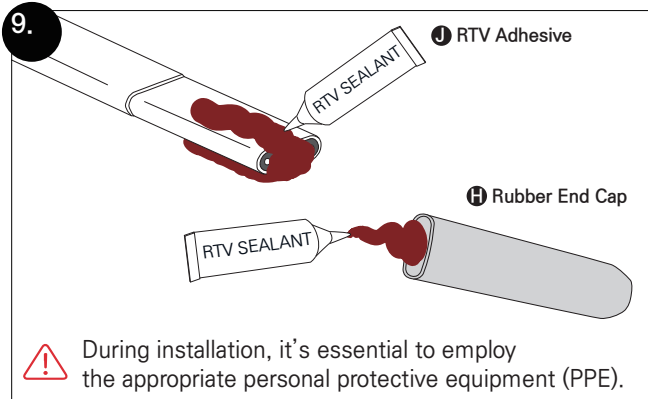
7.



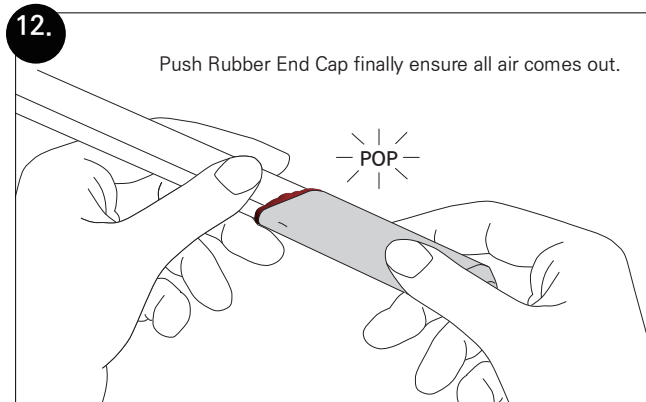
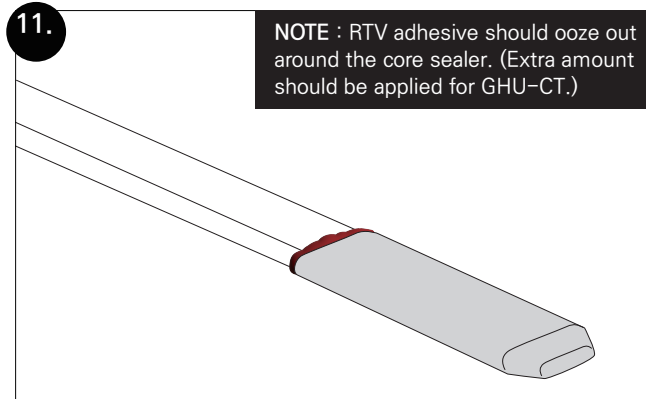
8.



## End Seal



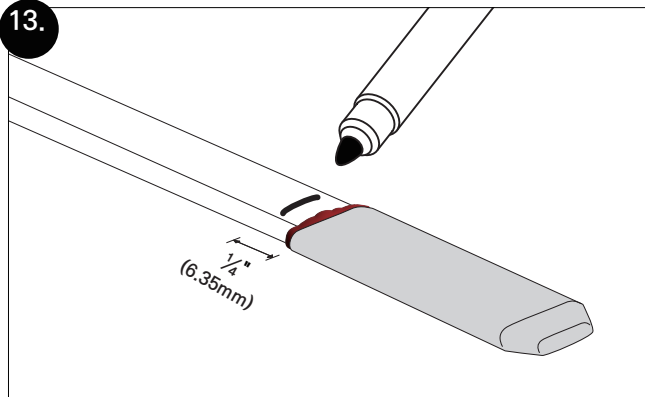
## End Seal



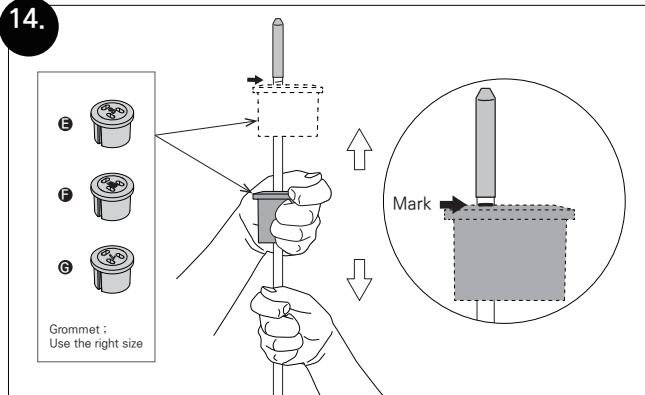


## End Seal

13.



14.



16.

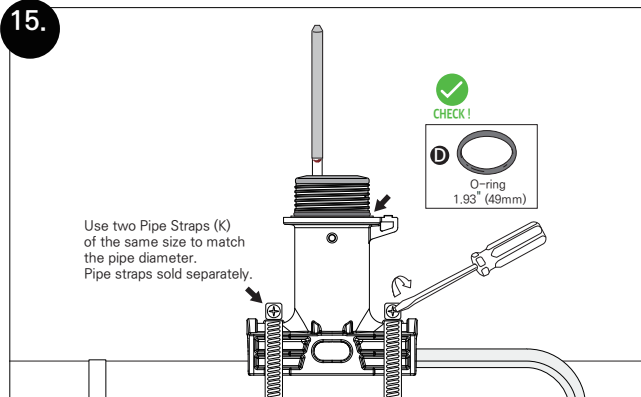


[www.gaumer.com](http://www.gaumer.com)

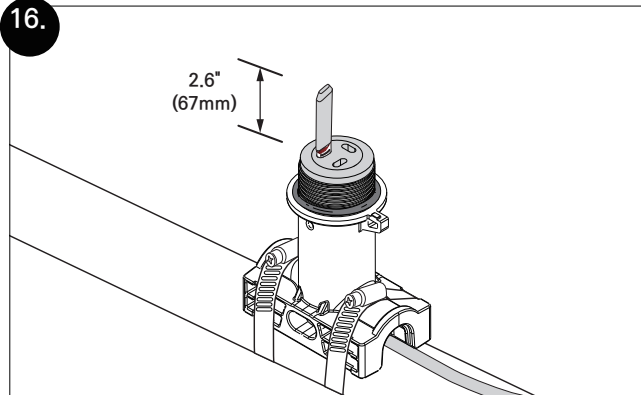
GAUMER CONNECTION KIT  
IM-GB300 Rev. 2024-09

## End Seal

15.



16.



GAUMER CONNECTION KIT  
IM-GB300 Rev. 2024-09

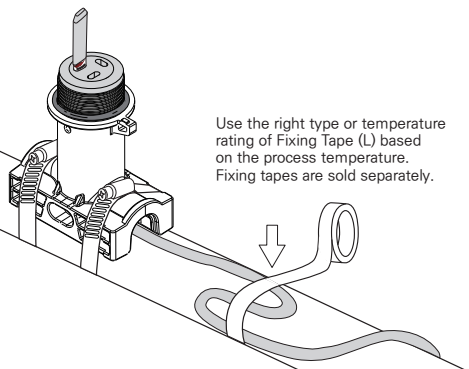
[www.gaumer.com](http://www.gaumer.com)



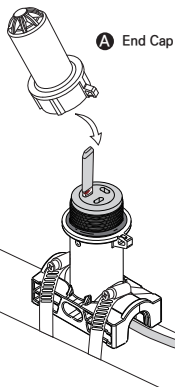
17.

## End Seal

17.

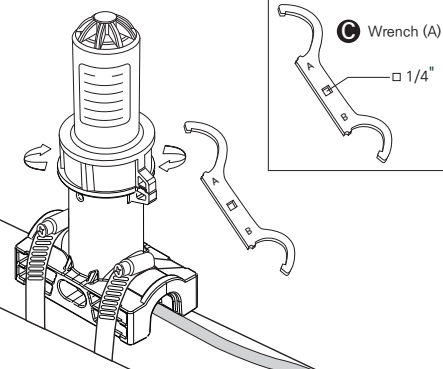


18.

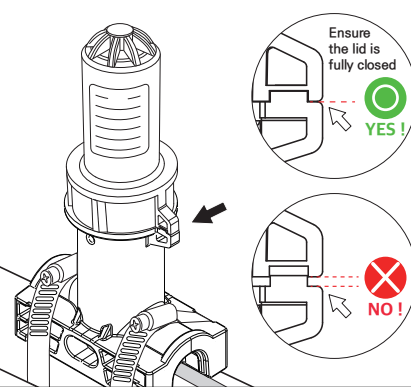


## End Seal

19.

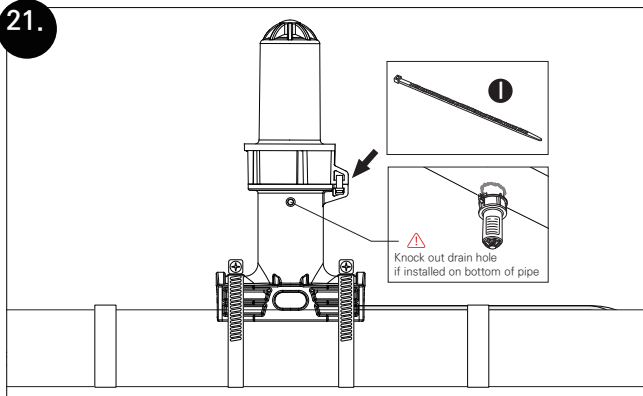


20.

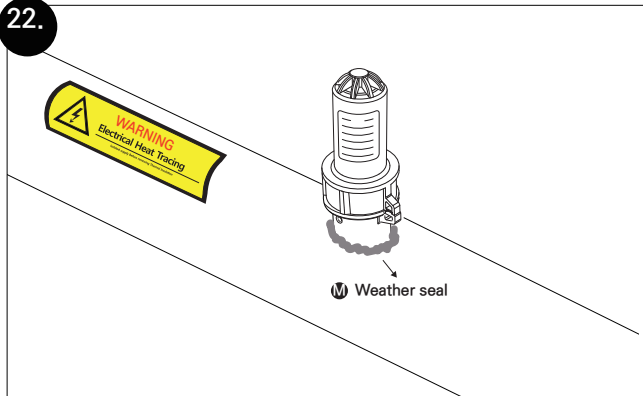


## End Seal

21.

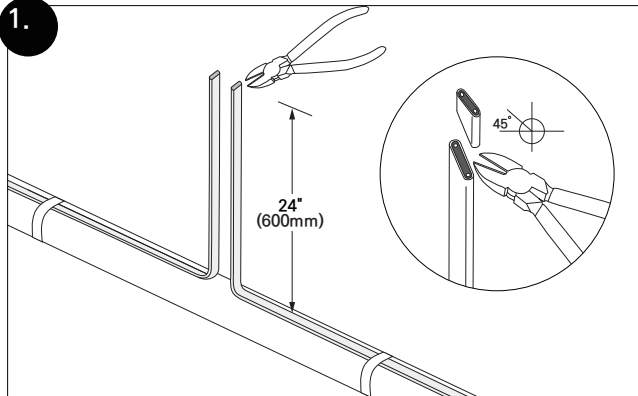
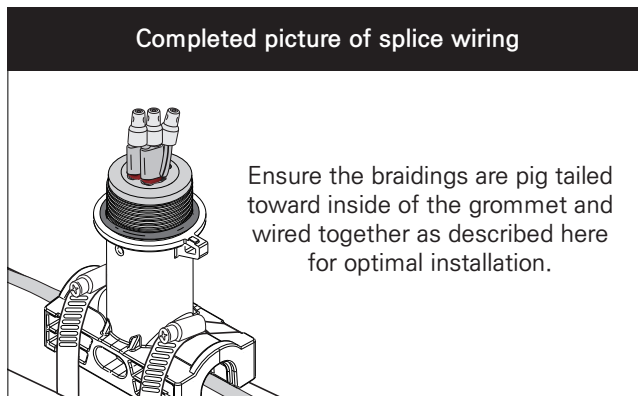


22.



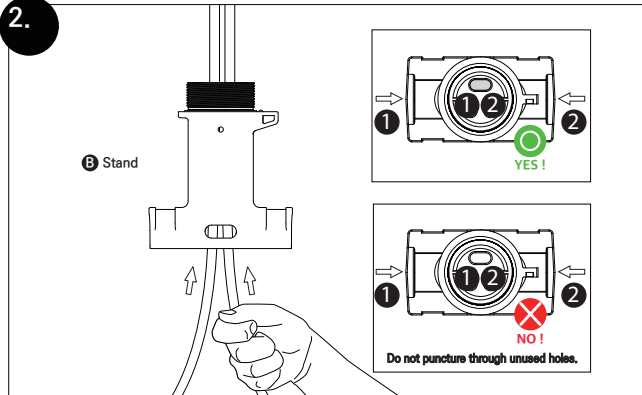
## In-Line Splice Connection

### Completed picture of splice wiring

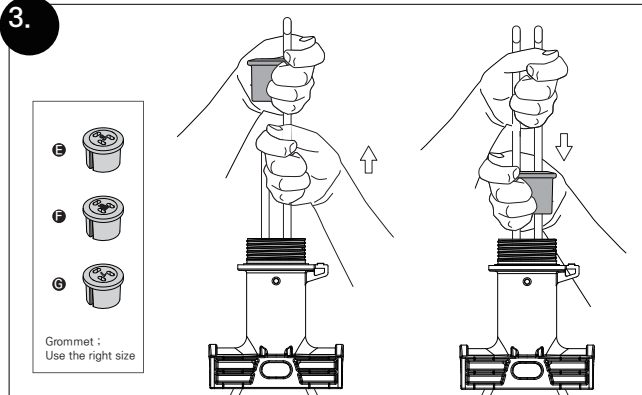


## In-Line Splice Connection

2.

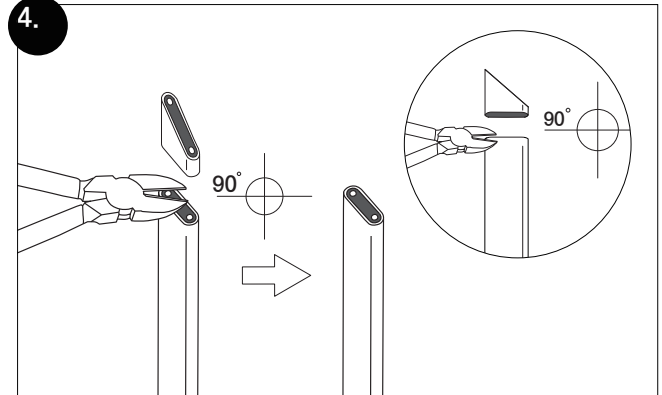


3.

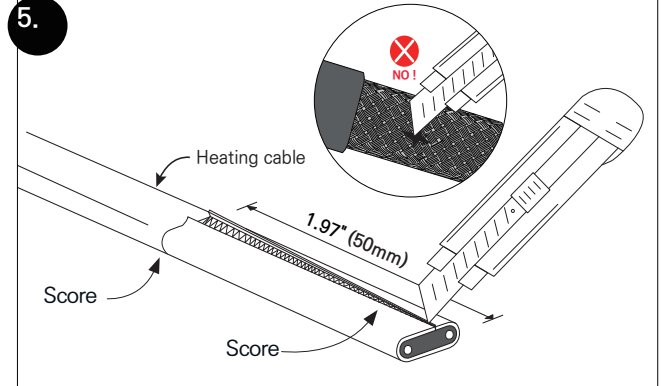


## In-Line Splice Connection

4.

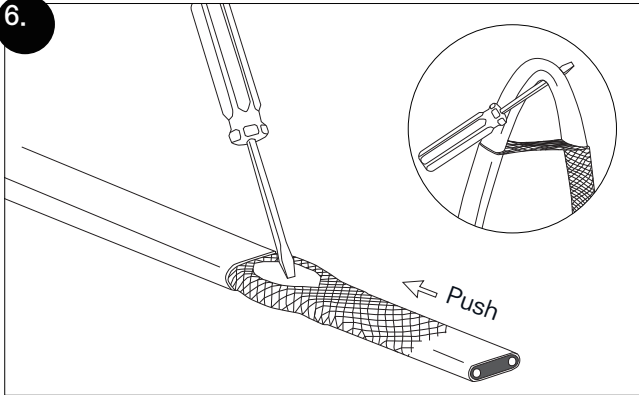


5.

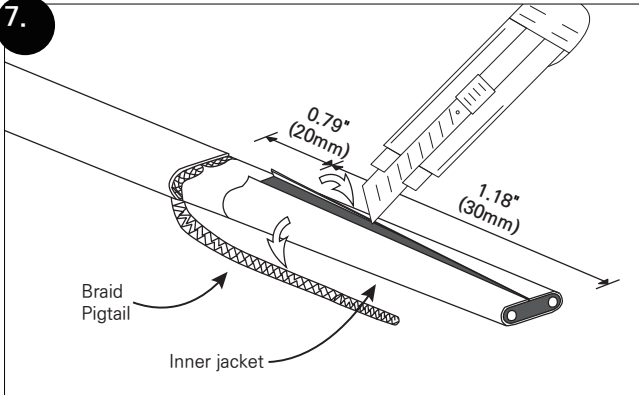


## In-Line Splice Connection

6.

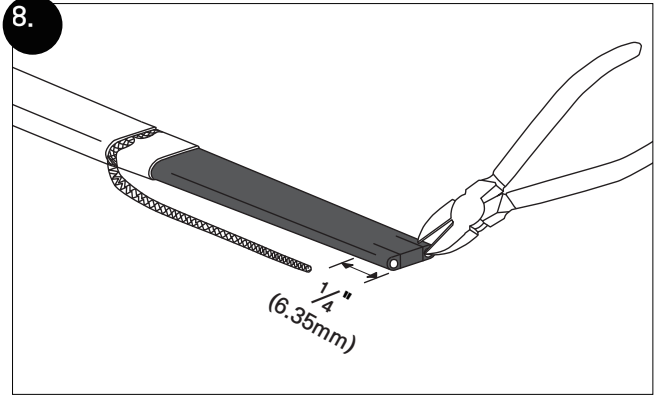


7.

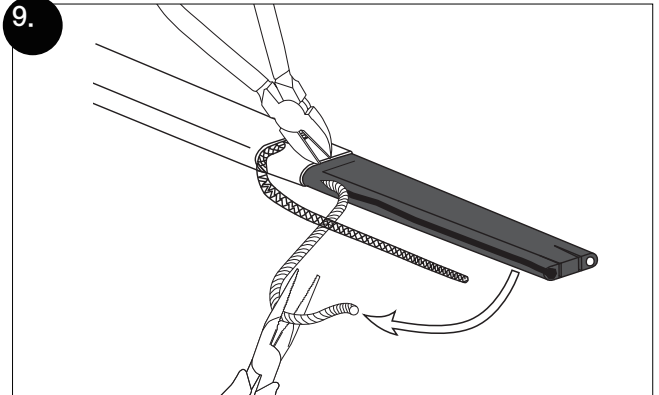


## In-Line Splice Connection

8.

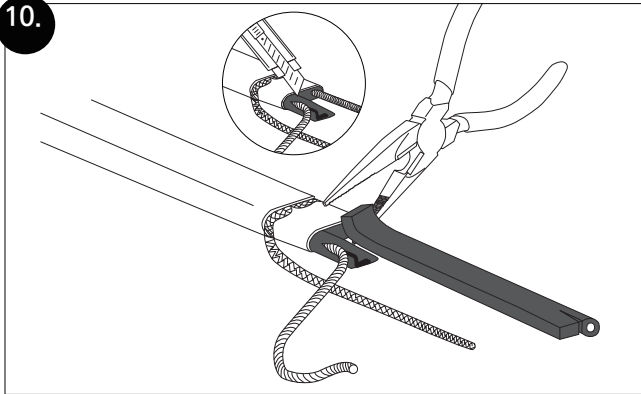


9.

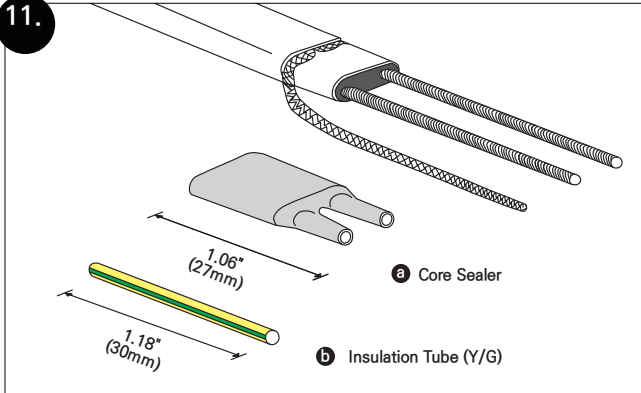


## In-Line Splice Connection

10.

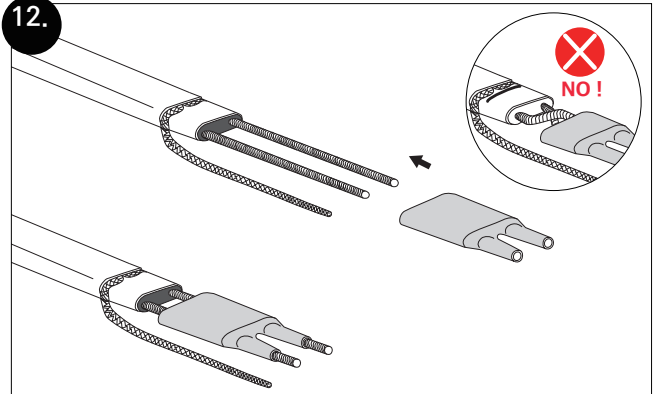


11.

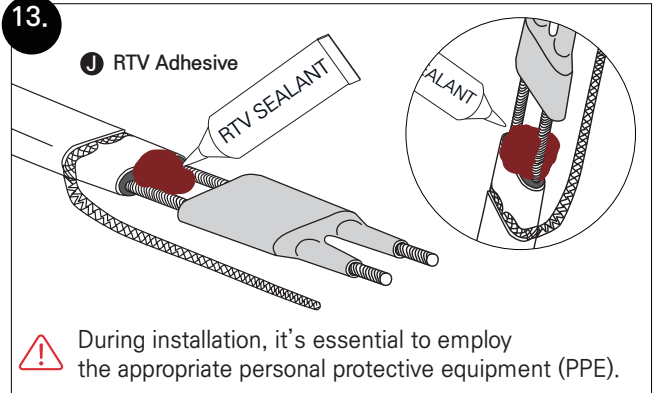


## In-Line Splice Connection

12.

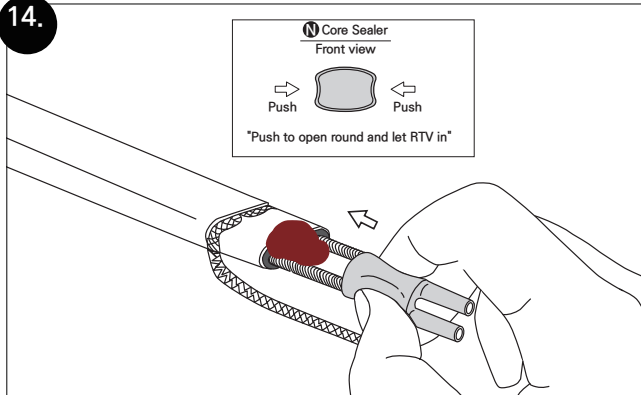


13.

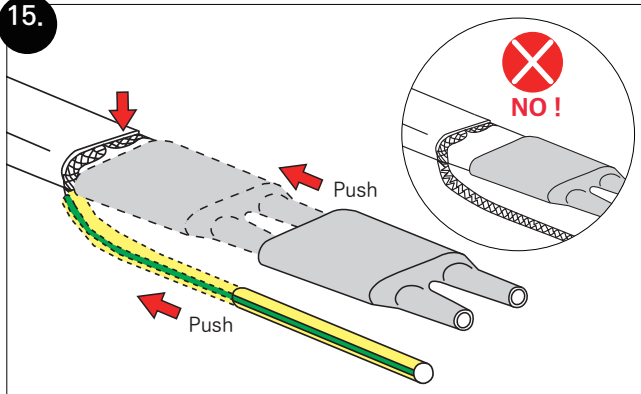


## In-Line Splice Connection

14.



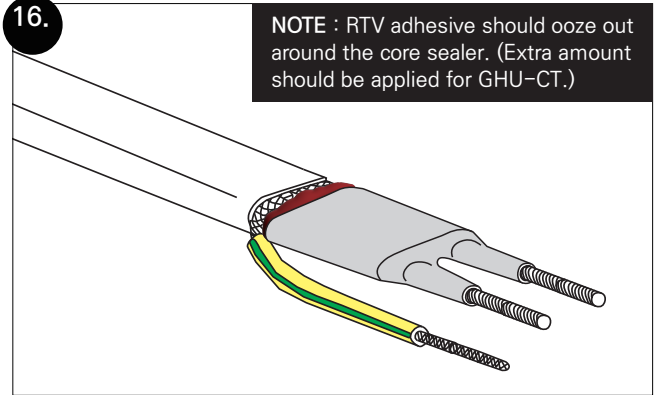
15.



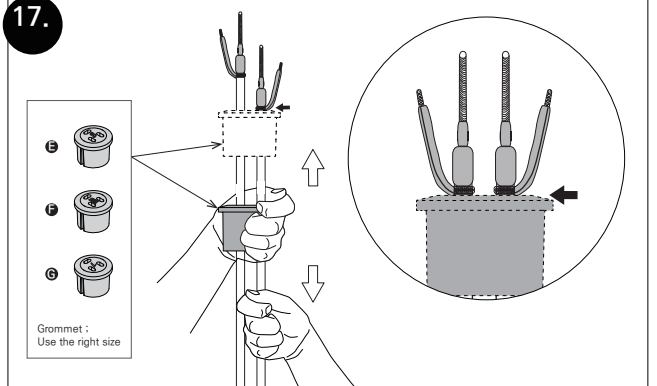
## In-Line Splice Connection

16.

NOTE : RTV adhesive should ooze out around the core sealer. (Extra amount should be applied for GHU-CT.)

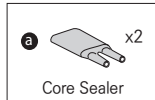


17.

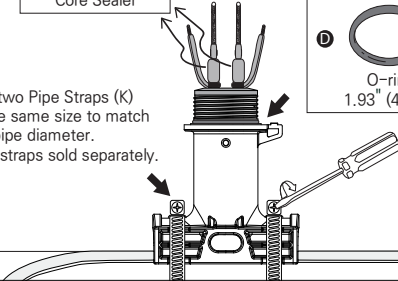


## In-Line Splice Connection

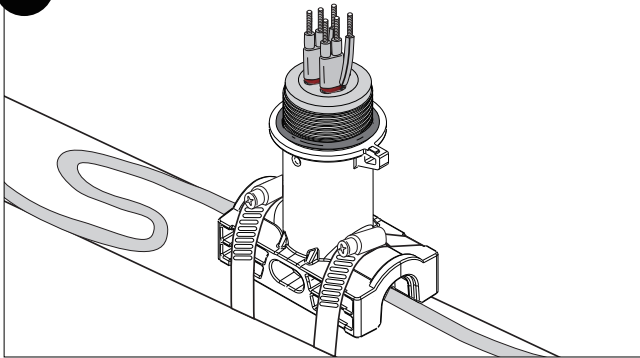
18.



Use two Pipe Straps (K) of the same size to match the pipe diameter.  
Pipe straps sold separately.

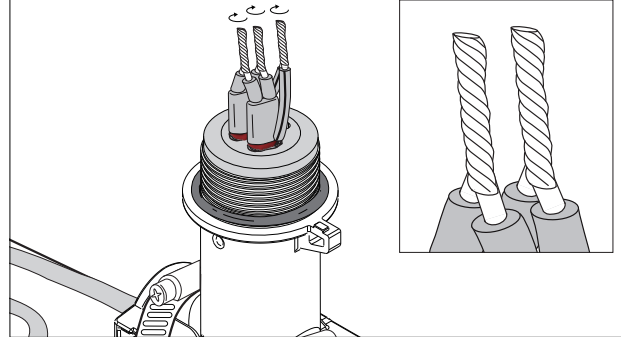


19.

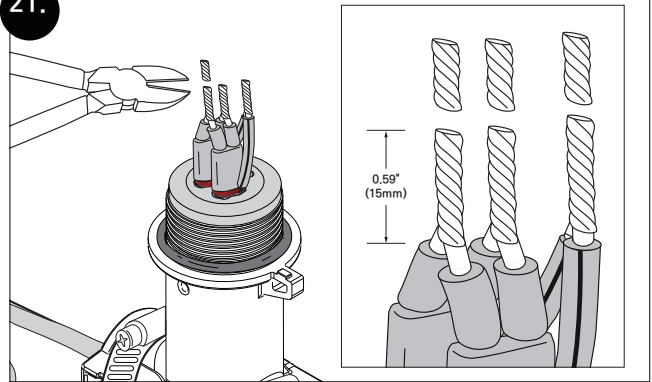


## In-Line Splice Connection

20.



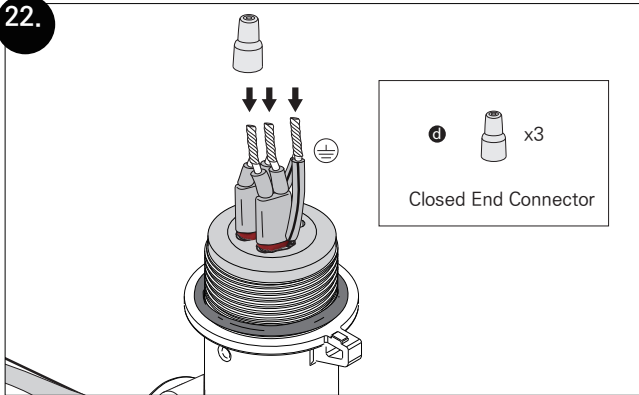
21.





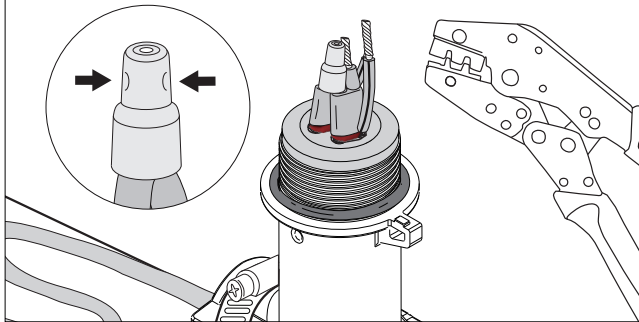
## In-Line Splice Connection

22.



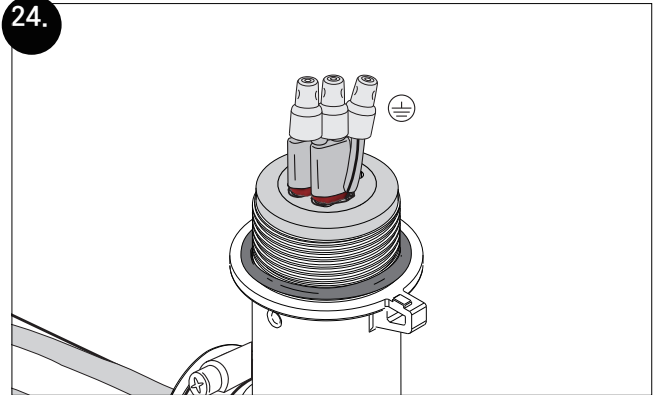
23.

Insert pre-twisted wires  
into connector and crimp.

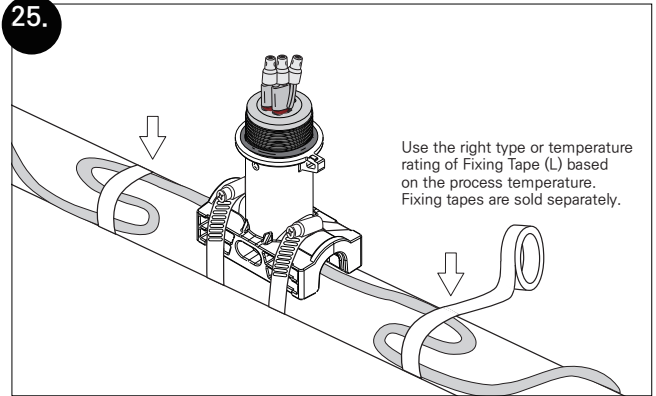


## In-Line Splice Connection

24.

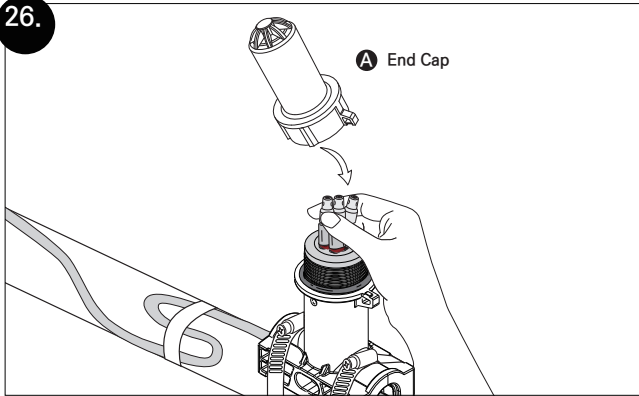


25.

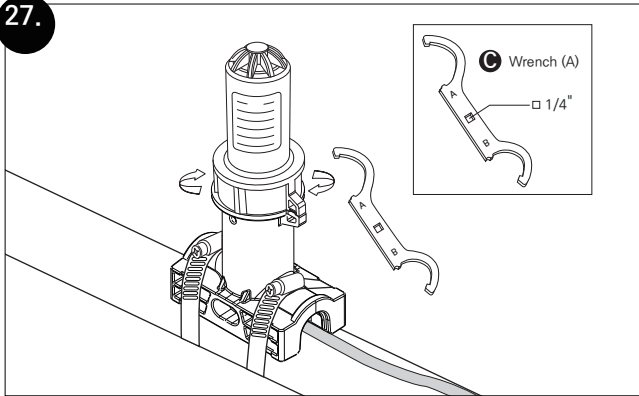


## In-Line Splice Connection

26.

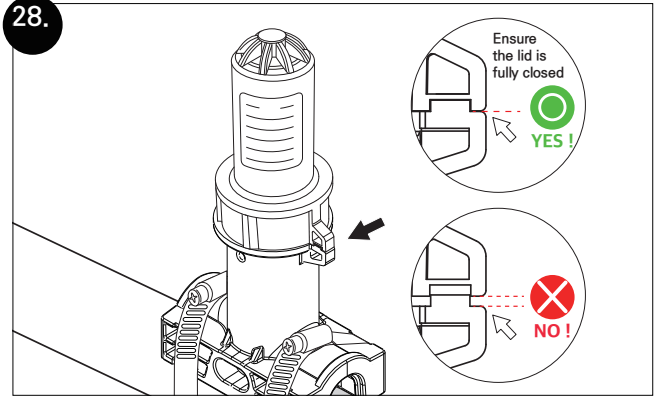


27.

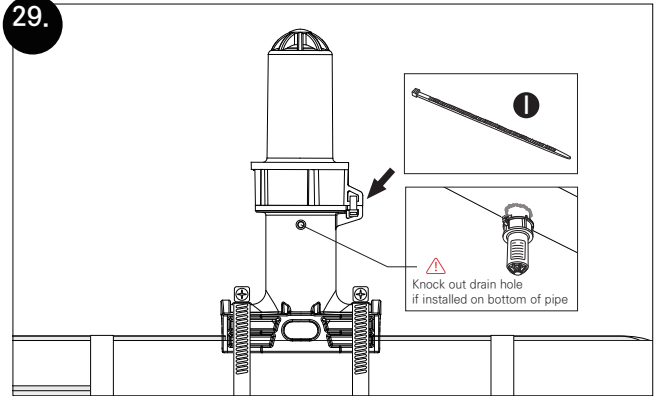


## In-Line Splice Connection

28.

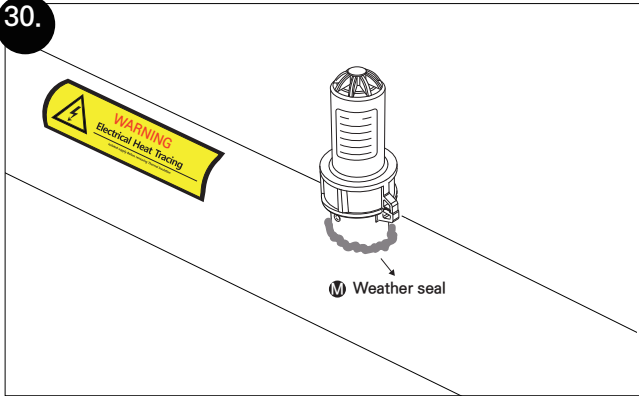


29.



## In-Line Splice Connection

30.





Gaumer Process

ADDRESS 13616 Hempstead Road · Houston, TX, U.S.A., 77040

WEB [www.gaumer.com](http://www.gaumer.com) TEL +1 (800) 460 5200 E-MAIL [sales@gaumer.com](mailto:sales@gaumer.com)